

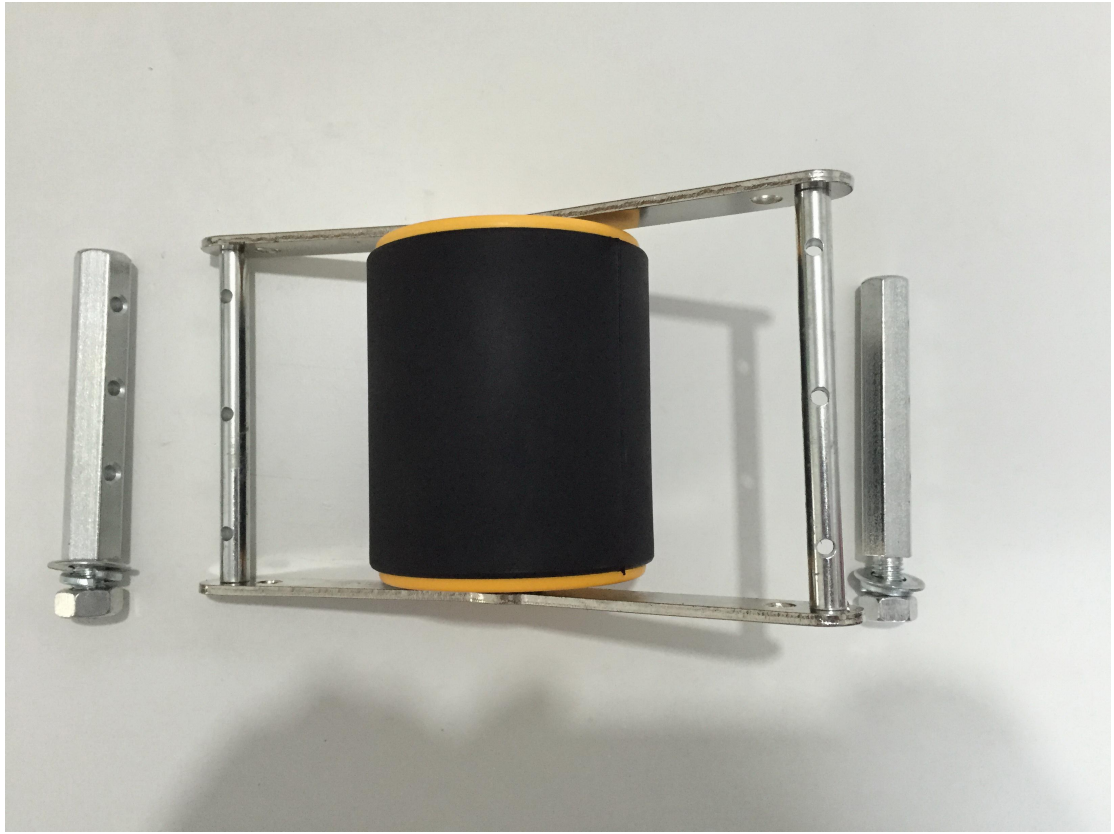
Brake Roller/Roller Reducer Catalogue

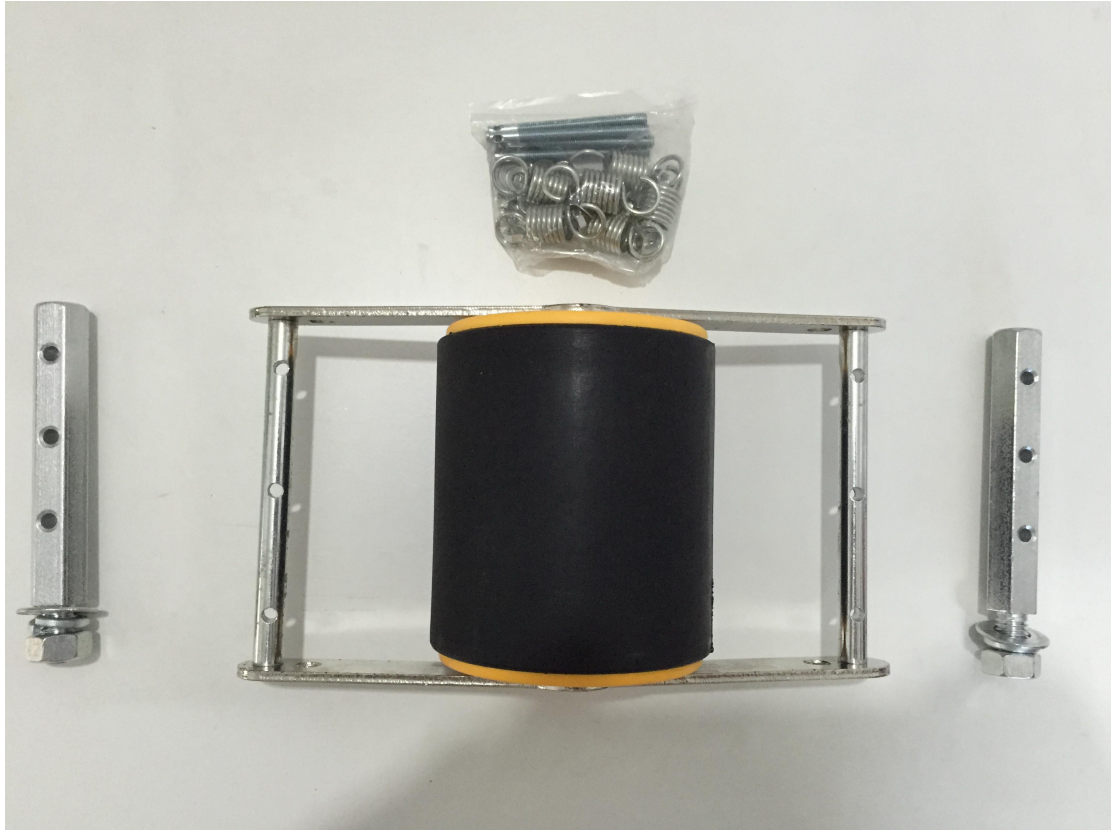
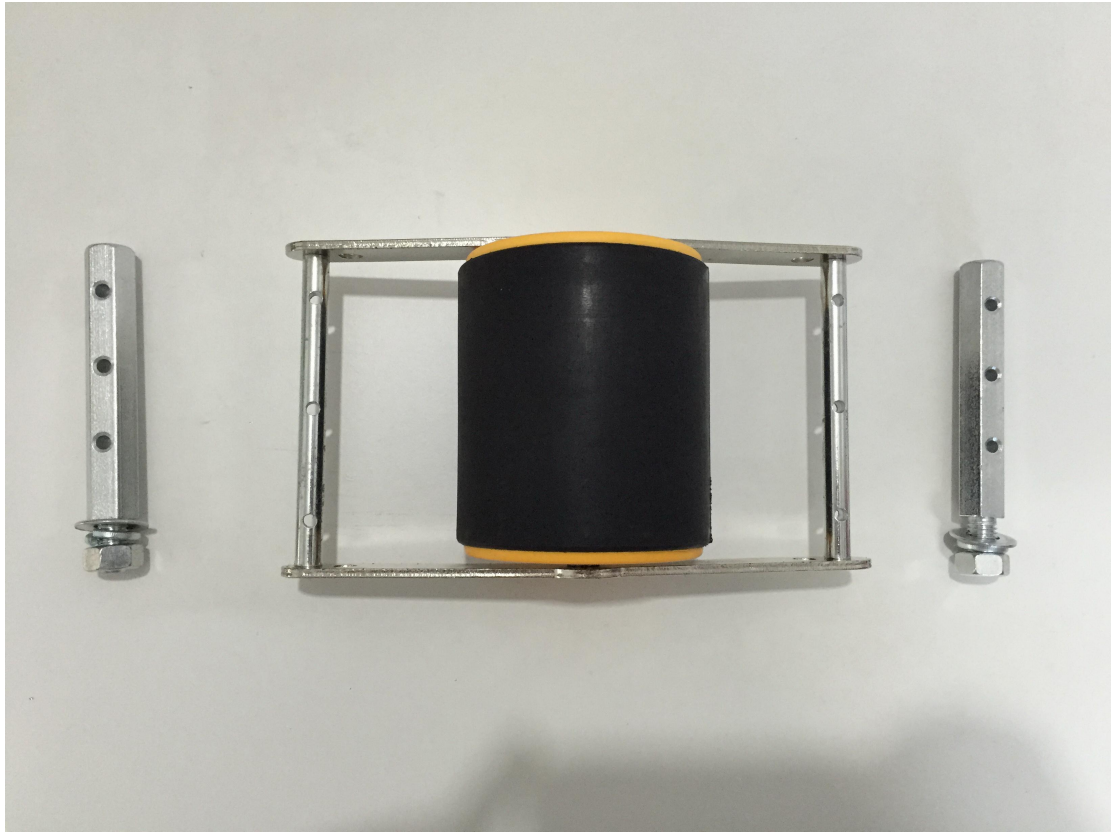
Code	Installation Way	Specification	Max Load Capacity
			kg
BR1	Outer Installation	Outer diameter=92mm, reducer face length=109mm.	1500
BR2		Outer diameter=120mm, reducer face length=79mm.	1000
BR3	Inner Installation	Outer diameter=80mm, shaft diameter=17mm, slot size=depth15mm*width12mm, fit for tube thickness=2.5mm.	1000
BR4		Outer diameter=89mm, shaft diameter=17mm, slot size=depth15mm*width12mm, fit for tube thickness=3mm.	1500

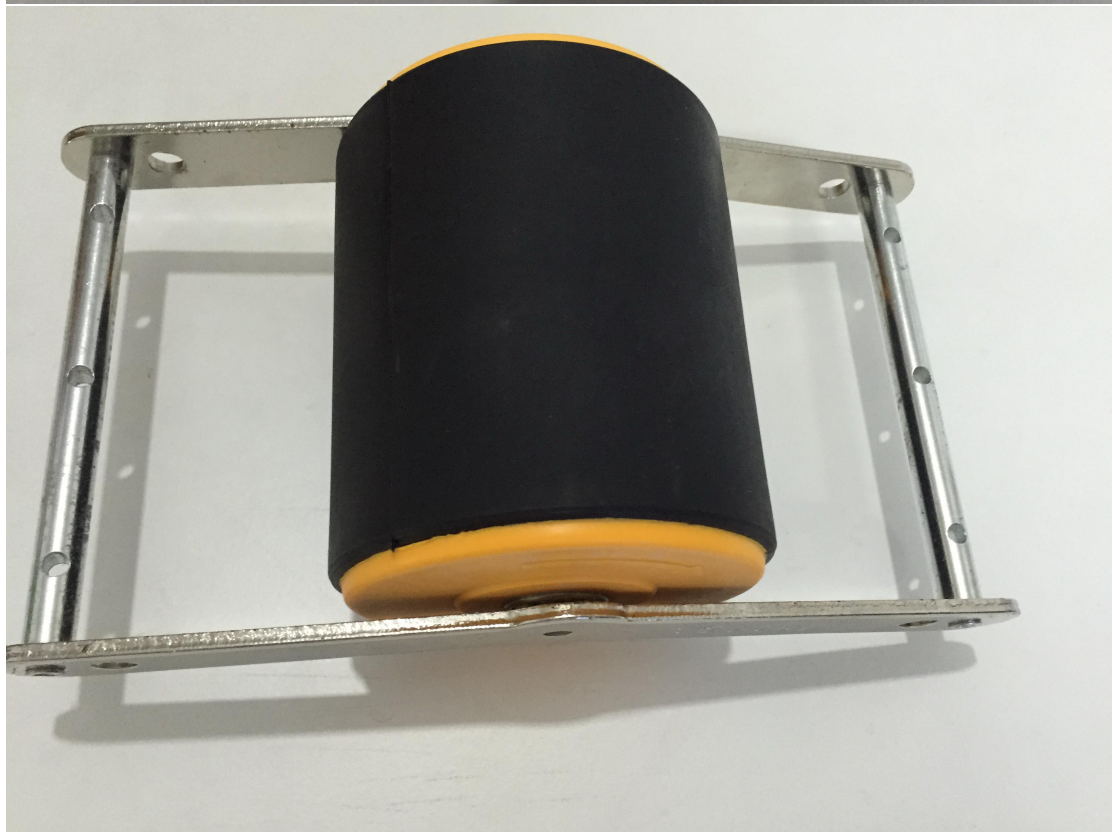
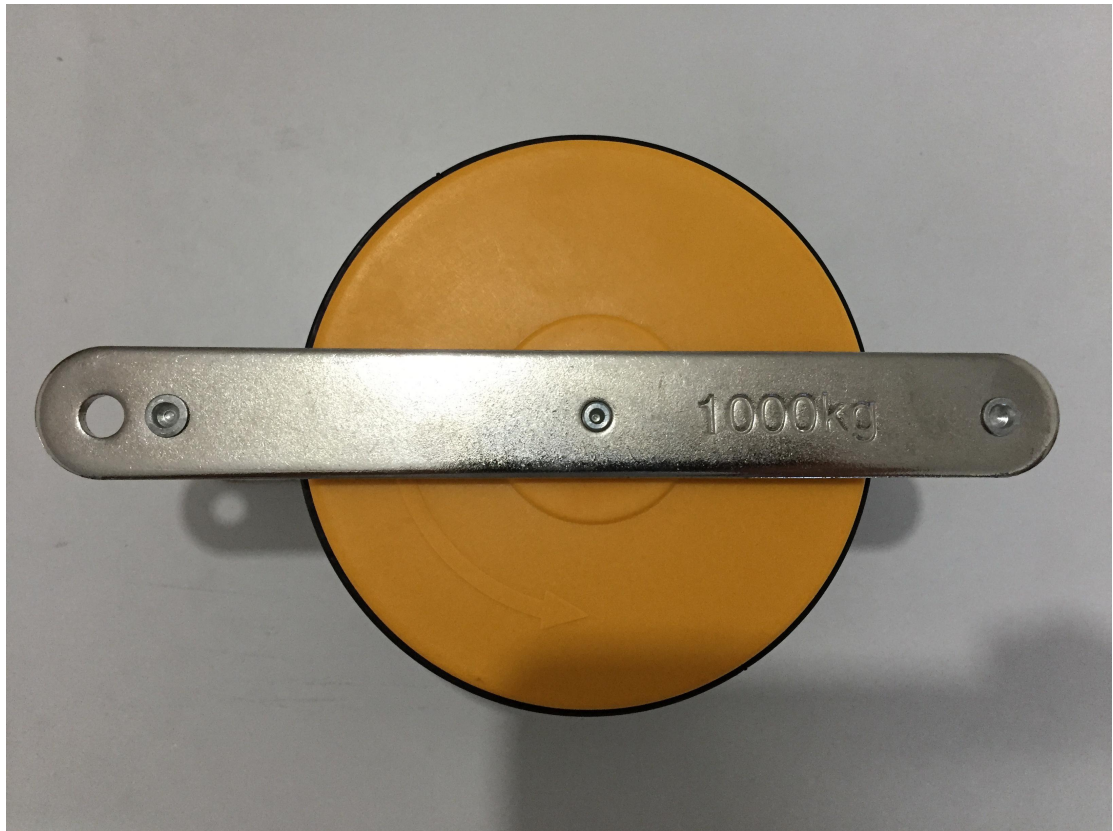
BR1&BR2, Outer Installation-Roller Reducer

Installed under the rollers, to touch with rollers to slow the pallet down.









Installation View Under The Roller Face

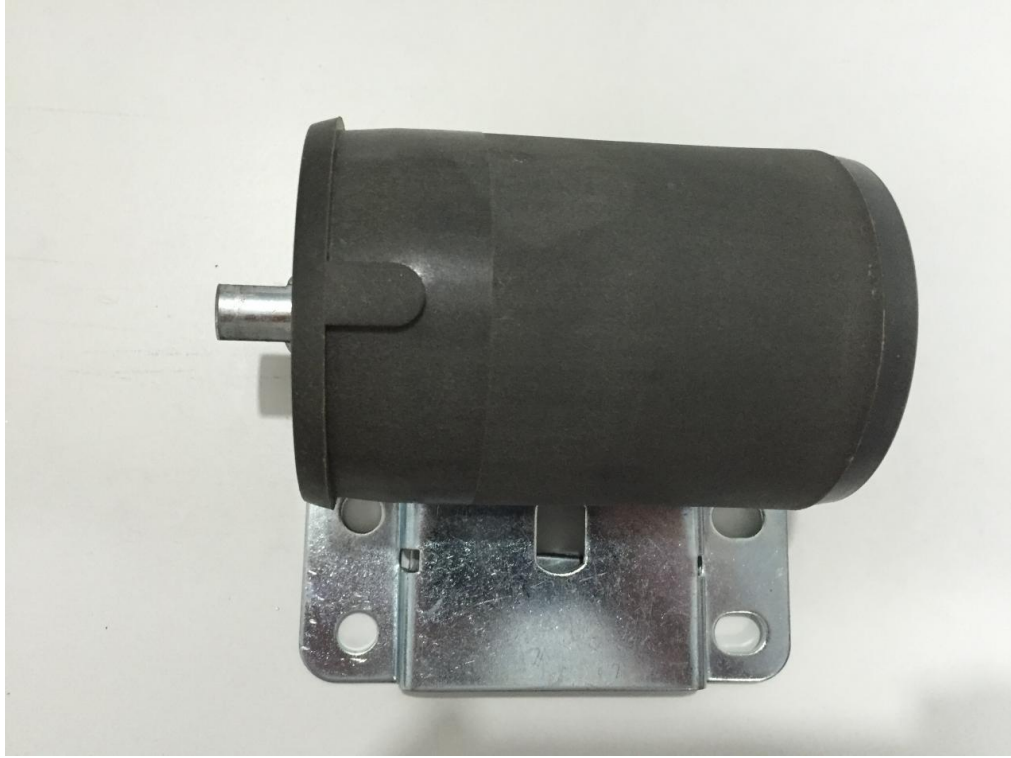






=====

BR3&BR4, Inner Installation-Roller Reducer
Installed into Tube, to become one complete roller which has friction to slow
the pallet down.









Installation View At the Side Of The Roller Face

